



Matthew G. Bevin
Governor

**COMMONWEALTH OF KENTUCKY
TRANSPORTATION CABINET**

Frankfort, Kentucky 40622
www.transportation.ky.gov/

Greg Thomas
Secretary

November 29, 2018

CALL NO. 308
CONTRACT ID NO. 185014
ADDENDUM # 1

Subject: NICHOLAS COUNTY, FD04 091 1096 000-001
Letting December 7, 2018

- (1) Revised - Title and Location Map Detail Sheet - Page 10 of 57
- (2) Revised - Typical Section Detail Sheet - Page 13 of 57
- (3) Revised - Proposal Bid Items - Page 57 of 57

Proposal revisions are available at <http://transportation.ky.gov/Construction-Procurement/>.

If you have any questions, please contact us at 502-564-3500.

Sincerely,

A handwritten signature in black ink that reads "Rachel Mills".

Rachel Mills, P.E.
Director
Division of Construction Procurement

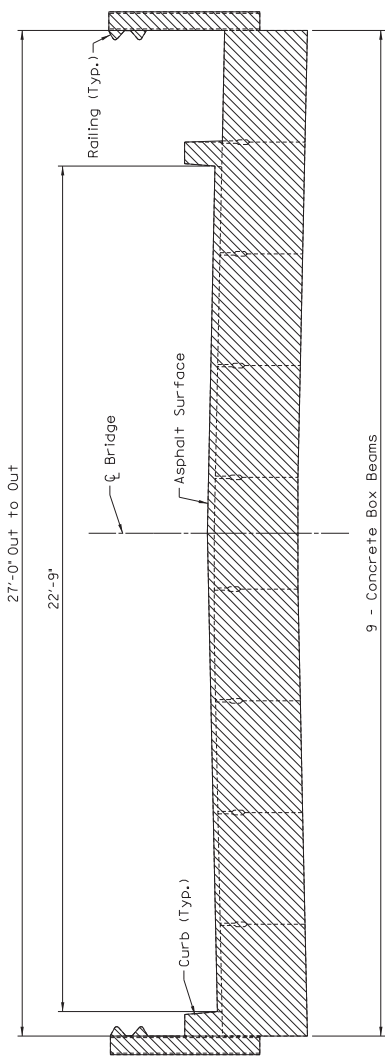
RM:mr
Enclosures



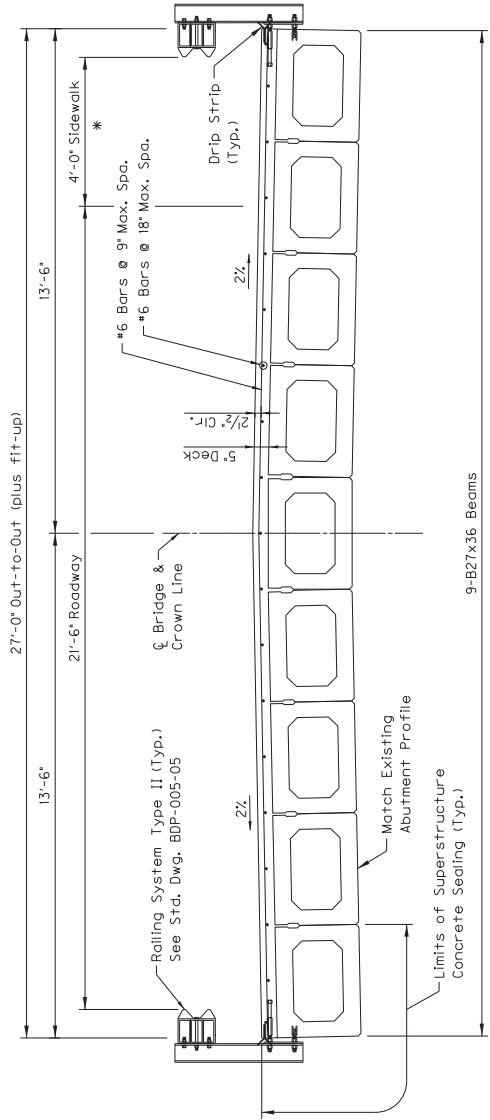
An Equal Opportunity Employer M/F/D

DRIP STRIP NOTES

1. Install lower stainless steel drip strip, as detailed, along the full length of each side of the bridge. If splices are required in the lower drip strip, tightly butt the individual pieces together, do not lap. Install a 1'-6" long upper drip strip at each railing post. Bend up strips at 90° against the inside face of the forms before concrete is placed. After the forms are removed, bend the drip strips into the final position of 45° as shown herein.
2. Stainless steel shall be a minimum of 22 gage ASTM A167, Type 304, mill finish.
3. Use care when stripping formwork so as not to damage or wrinkle the stainless steel drip strip. To further ensure that wrinkling of the strips does not occur, use an adequate length backup bar during the bending out operation.
4. Cost of all work, including all materials, labor, equipment, tools, and incidentals necessary, shall be considered incidental to Precast Box Beams.

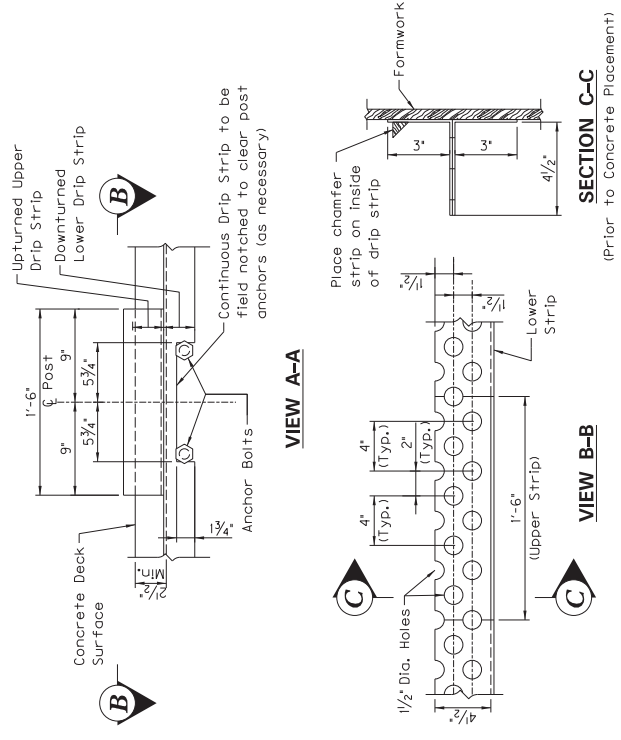
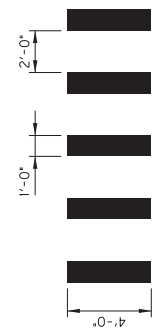


EXISTING TYPICAL SECTION



PROPOSED TYPICAL SECTION

* Install Pavement Marking-Thermo Crosswalk 12" per Typical Continental Crosswalk Markings at the face of the Railing System on the East side of the bridge. See Detail A.



REVISION	DATE
DESIGNED BY: K. Compton	CHECKED BY: T. Baker
DETAILED BY: K. Melchior	K. Compton
Commonwealth of Kentucky DEPARTMENT OF HIGHWAYS	
ROUTE NICHOLAS CROSSING	
TYPICAL SECTION	
PREPARED BY AECOM	

BRIDGE NUMBER	091C00029N
---------------	------------

SECTION C-C
(After Concrete Placement)

DETAIL A
Typical Continental Crosswalk Markings

PROPOSAL BID ITEMS

185014

Page 1 of 1

Report Date 11/29/18

Section: 0001 - PAVING

LINE	BID CODE	ALT	DESCRIPTION	QUANTITY	UNIT	UNIT PRIC	FP	AMOUNT
0010	00212		CL2 ASPH BASE 1.00D PG64-22	30.00	TON		\$	
0020	00301		CL2 ASPH SURF 0.38D PG64-22	12.00	TON		\$	
0030	02585		EDGE KEY	114.00	LF		\$	

Section: 0002 - ROADWAY

LINE	BID CODE	ALT	DESCRIPTION	QUANTITY	UNIT	UNIT PRIC	FP	AMOUNT
0040	00003		CRUSHED STONE BASE	12.00	TON		\$	
0050	01982		DELINEATOR FOR GUARDRAIL MONO DIRECTIONAL WHITE	4.00	EACH		\$	
0060	02360		GUARDRAIL TERMINAL SECTION NO 1	4.00	EACH		\$	
0070	02650		MAINTAIN & CONTROL TRAFFIC	1.00	LS		\$	

Section: 0003 - BRIDGE - BRUSH FORK - DWG. 27839

LINE	BID CODE	ALT	DESCRIPTION	QUANTITY	UNIT	UNIT PRIC	FP	AMOUNT
0080	02555		CONCRETE-CLASS B	6.00	CUYD		\$	
0090	02611		HANDRAIL-TYPE A-1	4.00	LF		\$	
0110	03299		ARMORED EDGE FOR CONCRETE	54.00	LF		\$	
0120	06566		PAVE MARKING-THERMO X-WALK-12 IN	58.00	LF		\$	
0130	08003		FOUNDATION PREPARATION	1.00	LS		\$	
0140	08019		CYCLOPEAN STONE RIP RAP	25.00	TON		\$	
0150	08104		CONCRETE-CLASS AA	24.00	CUYD		\$	
0160	08151		STEEL REINFORCEMENT-EPOXY COATED	4,921.00	LB		\$	
0170	08301		REMOVE SUPERSTRUCTURE	1.00	LS		\$	
0180	08621		PRECAST PC BOX BEAM B27-36	522.00	LF		\$	
0190	08801		GUARDRAIL-STEEL W BEAM-S FACE BR	116.00	LF		\$	
0200	23378EC		CONCRETE SEALING	1,289.00	SQFT		\$	

Section: 0004 - DEMOBILIZATION &/OR MOBILIZATION

LINE	BID CODE	ALT	DESCRIPTION	QUANTITY	UNIT	UNIT PRIC	FP	AMOUNT
0210	02569		DEMOBILIZATION	1.00	LS		\$	